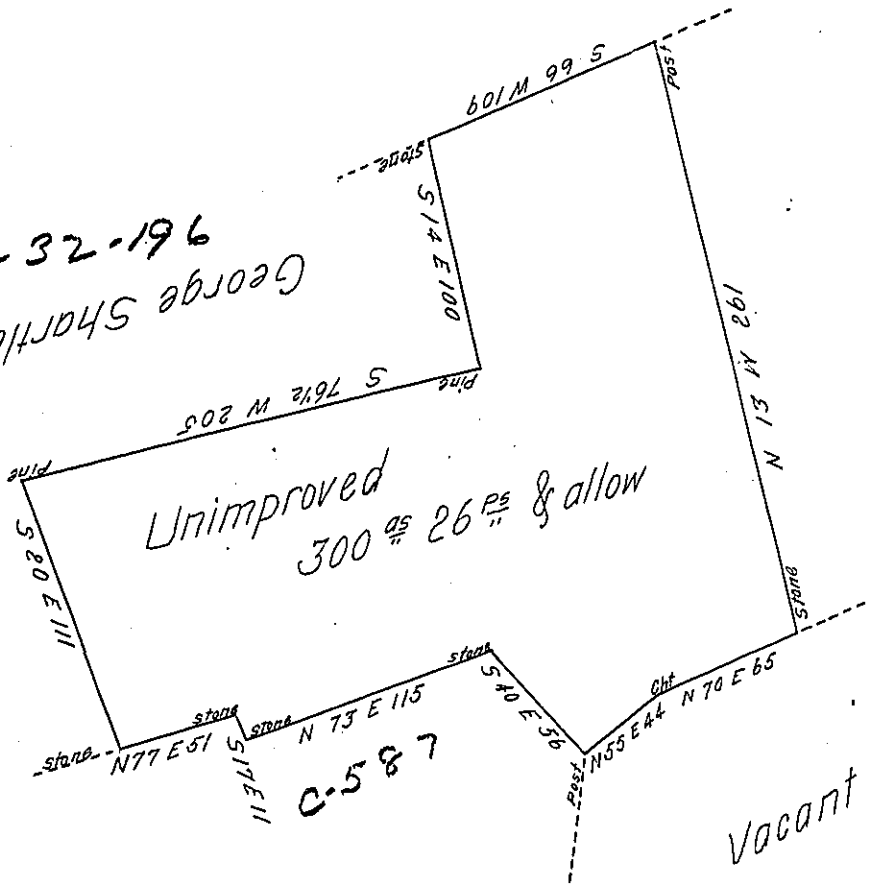


228-191
John Ditzler

D-32-196
George Sharple



156

John Fidler

John Hughes

Situate in Barry township Schuylkill county containing three hundred acres and twenty six perches and the allowance of six per cent surveyed on the 15th and 16th days of December 1829 in pursuance of a warrant dated the 14th day of August 1829 granted John Fidler.

To Frederick Lauderbrun Esq.
Deputy Surveyor

Henry Stager

Deputy Surveyor's Office June 10th 1830

I certify that the above is a true copy of the original now filed in the Deputy Surveyor's office.

To Jacob Spangler Esquire
Surveyor General of Penn^a

P. W. Jackson D.S.

IN TESTIMONY that the above is a copy of the original remaining on file in the Department of Internal Affairs of Pennsylvania, made conformably to an Act of Assembly approved the 16th day of February, 1833, I have hereunto set my Hand and caused the Seal of said Department to be affixed at Harrisburg, this twenty sixth day of October 1904

George D. Brown
Secretary of Internal Affairs